

# HYDROBAFFLE

## MOBILE DAM

Hydrobaffle is a patented water inflated damming device that is less costly than conventional forms of dewatering or flood protection and can replace sandbags, sheet piling or earthen cofferdams. Hydrobaffles patented internal baffle system guarantees a stable and reliable system when compared to other water inflated dams on the market. Each unit is manufactured using a commercial grade, flexible membrane and is available in sizes ranging from 0.23 m to 2.44 m high, and from 3 m to 32 m in length.

**Hydrobaffle is rapidly deployed, lightweight, compact in storage, eco-friendly and reusable.**



Length: 455 m Waterdepth: 1.83 m  
Deployment time: 10 hrs.



Length: 100 m Waterdepth: 1.60 m  
Deployment time: 3 hrs.



Length: 270 m  
Waterdepth: 1.80 m  
Deployment time: 6 hrs.

## HYDROBAFFLE Standard Height & Dimensions

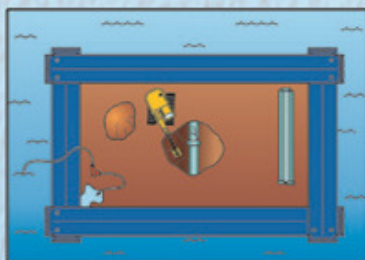
Size	Height (m)	Max. Controllable Depth (m)	Width (empty)	Width (filled)	Liter/Meter	Min. Overlap length (m)	kg /Meter (empty)
0	0,23	0,17	0,71	0,52	130	0,35	1,96
1	0,31	0,23	0,84	0,69	174	0,76	2,61
2	0,61	0,46	1,52	1,20	695	0,91	4,42
3	0,92	0,69	2,59	2,13	1627	1,37	6,85
4	1,22	0,91	3,65	3,05	2794	1,83	8,58
5	1,53	1,14	4,57	3,81	4371	2,29	12,39
6	1,83	1,37	5,48	4,57	6284	2,74	15,49
7	2,14	1,60	6,40	5,33	8544	3,20	17,87
8	2,44	1,83	7,32	6,10	11189	3,66	20,32

## HYDROBAFFLE Connection Requirements

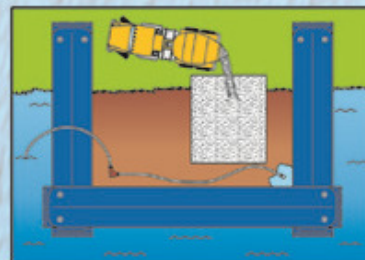
Each inflated Hydrobaffle section is straight without the ability to bend. When joining Hydrobaffle, an overlapping technique is used. Simply place the barrier to be inflated on top of the end of the inflated barrier and begin the process. The amount of overlap is determined by barrier height. See chart above.



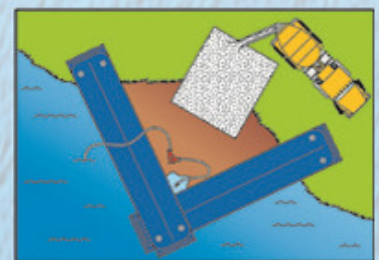
## Standard HYDROBAFFLE Configurations



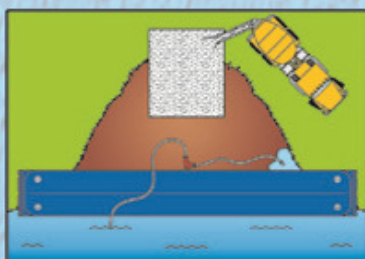
Full Enclosure



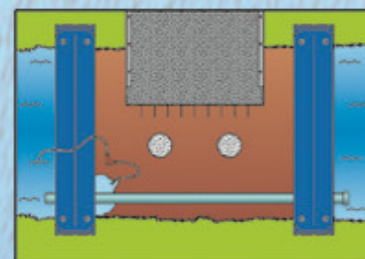
Partial Enclosure



Partial Enclosure



Single



Canal Block



Between 2 Walls

Please visit [www.Hydrobaffle.com](http://www.Hydrobaffle.com) for more Information